

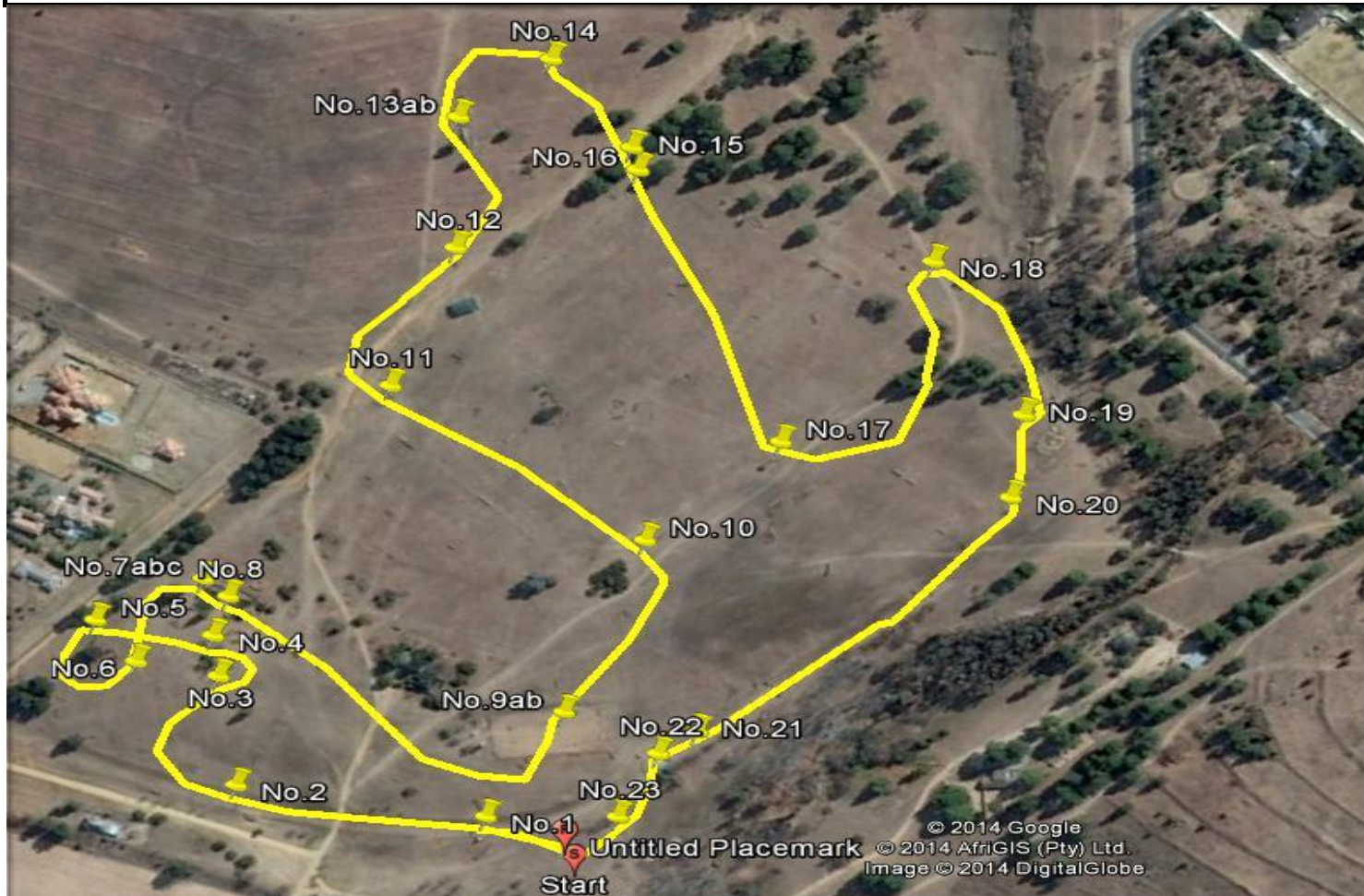
2014 SA CHAMPIONSHIPS - CNC ONE STAR COURSE



1	Bag Spread
2	Old One
3	Brush
4	Arrowhead
5ab	Step to Brush box
6	Table
7	Cross Oxer
8	Blenheim Brush
9	Stone Oxer
10ab	Masks to Splash
11ab	Steps Up
12	One Star Corner
13	Bags in Barn
14ab	Barloworld Broken Bridge
15	Narrow Brush
16	Wooden Corner
17	Palisade Ditch
18	Next Ditch
19	Ancient Log
20	Angled Ditch
21	Epol Normandy Splash
22	Epol Serpent
23	Clifford's Pipes

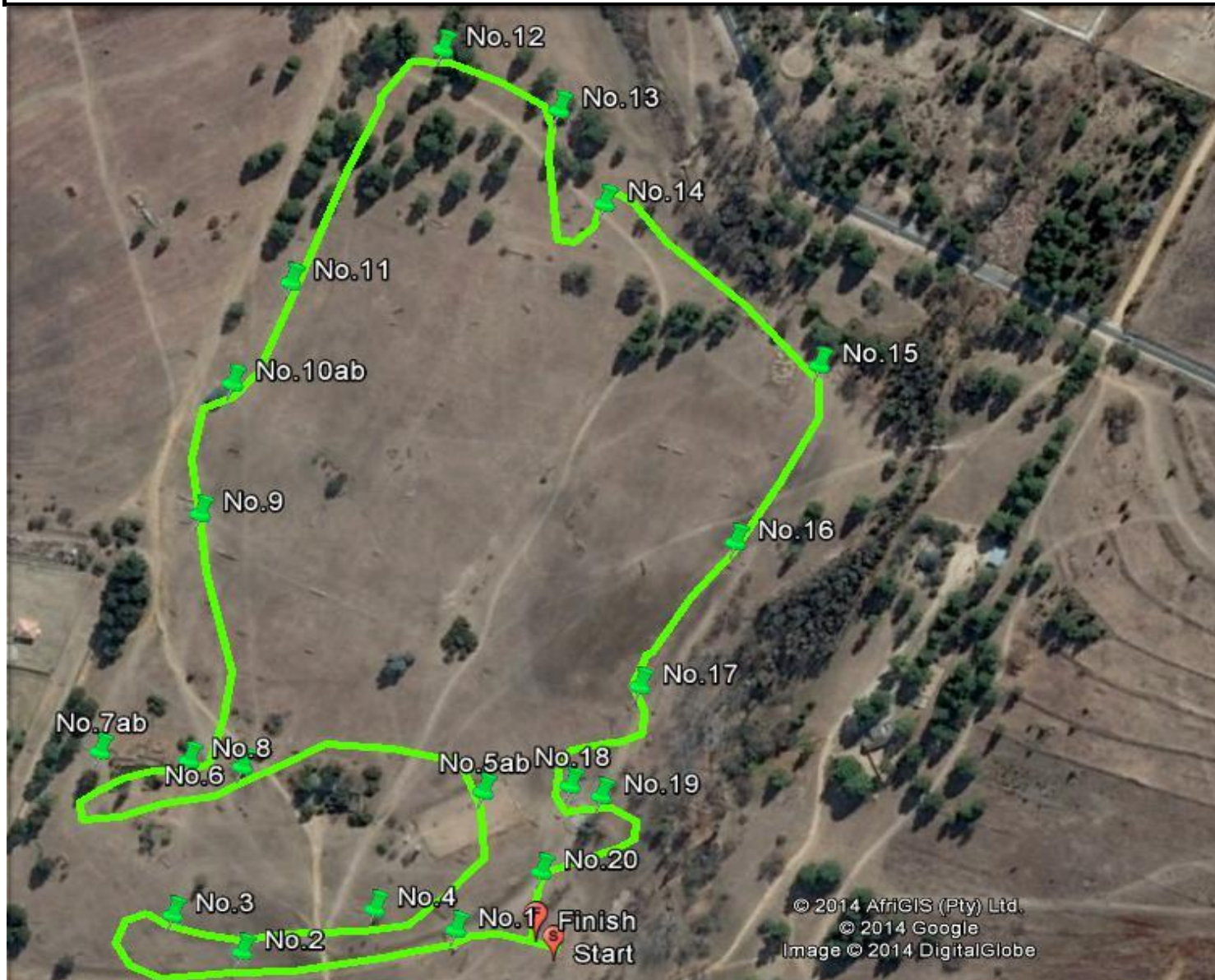
Image © 2014 DigitalGlobe
 © 2014 AfriGIS (Pty) Ltd.
 © 2014 Google

2014 SA CHAMPIONSHIPS - EV.100 COURSE



1	Brush
2	Old One
3	Holey Log
4	Into the Dip
5	Log Clump
6	Picnic Table
7abc	Water Run
8	Big Stack
9ab	Double Corners
10	Hidden Brush
11	Hunt Logs
12	Andy's Ditch
13ab	Bridge Offsets
14	Trekahner
15	Offset Rails
16	Offset Rails
17	Greg's Ditch
18	Cheese Corner
19	Builders Gate
20	Open Corner
21	Bath Tub
22	Normandy Splash
23	The Four Seater

2014 SA CHAMPIONSHIPS - EV.90 COURSE



1	Log Oxer
2	Old One
3	Mushroom Rail
4	Swazi Arrow
5ab	Rail to 4seater
6	Cross Oxer
7ab	Water Splash
8	Wooden House
9	Swazi Picnic Table
10ab	Barn Combo
11	Corner
12	Hunt Log
13	Ditch
14	Cheese Corner
15	Sacks
16	Ditch
17	Water tank Drop
18	Patricia's
19	Tyres
20	The Fourseater

© 2014 AfriGIS (Pty) Ltd.
 © 2014 Google
 Image © 2014 DigitalGlobe

2014 SA CHAMPIONSHIPS - EV.80 COURSE



1	Log Rail
2	Old One
3	Mushroom Rail
4	Swazi Arrow
5ab	Spread to Tyres
6	Gum Gate
7	Log Stack
8	Water Splash
9abc	Steps to Slanter
10	Palisade
11	Barn Drop
12	Alternatives
13	Ditch Slanter
14	Cheese Wedge
15	Mushroom Skinny
16	Rustic Rails
17	Water Tanks
18	Normandy Approach
19	Normandy Exit
20	Bill's Pipes

2014 SA CHAMPIONSHIPS - EV.70 COURSE



1	Welcome Rail
2	Log Stack
3	Straw Bales
4	Old One
5	Tree Trunk
6	Water Rail
7	Drums
8ab	Ditch & Rail
9	Jonny's Gate
10	Barn Wall
11	Big Sticks
12	Sacks
13ab	Skinny to Log
14	Gate
15	Drop
16	Behind the Bank
17	Bill's Pipes