



JUMPS

- 1 Wattle Log
- 2 Gum Log
- 3 Brush
- 4 Log Stack
- 5 Hedge Spread
- 6 Logs
- 7 Hands Off
- 8 Water
- 9 Gum Upright
- 10 Wattle Graveyard
- 11 Grey Box

EV 60 - OAKSPRINGS

Distance: 1100m
Speed: 420mpm
T/A: 2min 37secs
Pink Numbers on Black

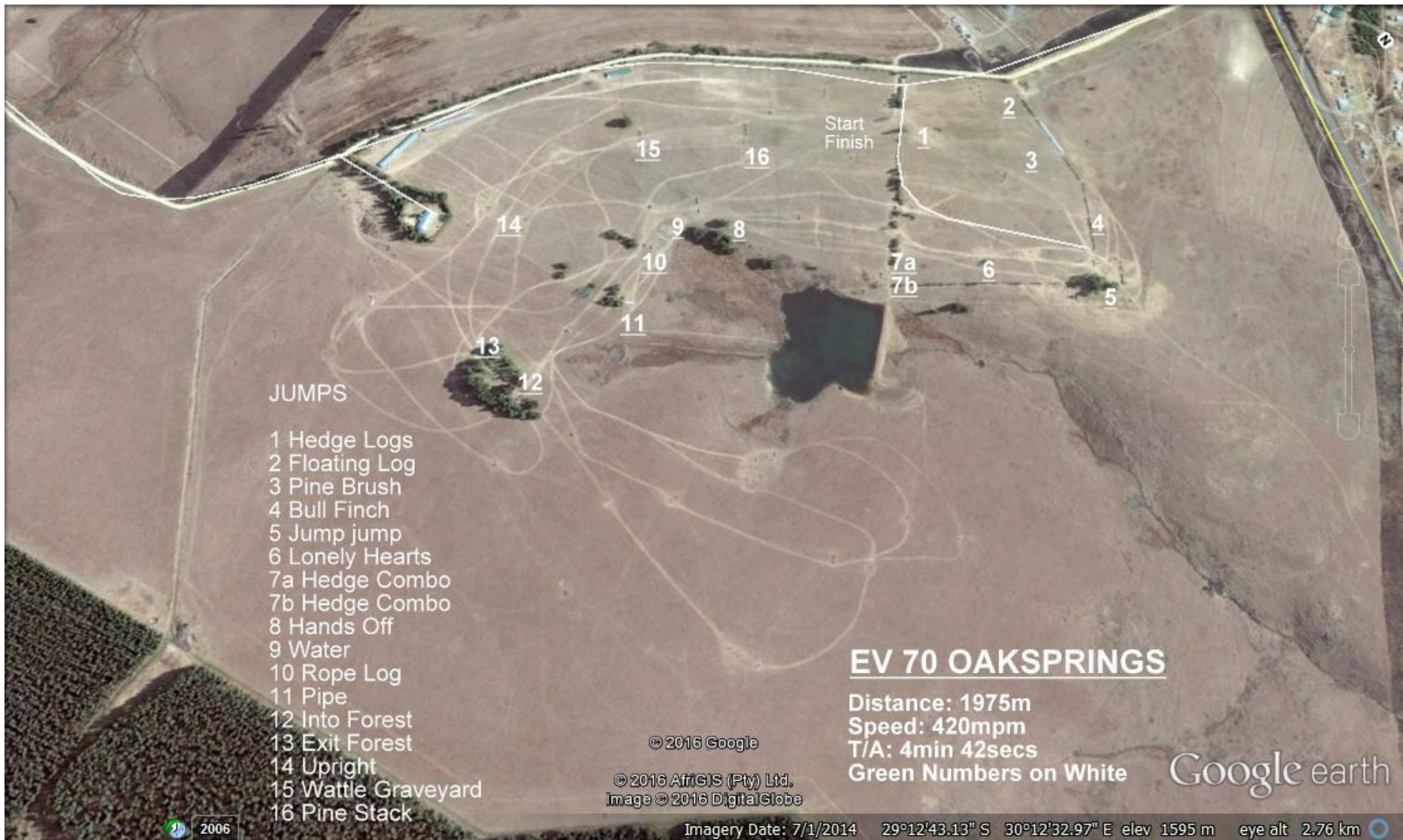
© 2016 Google

© 2016 AfrGIS (Pty) Ltd.
Image © 2016 DigitalGlobe

Google earth

2006

Imagery Date: 7/1/2014 29°12'43.13" S 30°12'32.97" E elev 1595 m eye alt 2.76 km



JUMPS

- 1 Hedge Logs
- 2 Floating Log
- 3 Pine Brush
- 4 Bull Finch
- 5 Jump jump
- 6 Lonely Hearts
- 7a Hedge Combo
- 7b Hedge Combo
- 8 Hands Off
- 9 Water
- 10 Rope Log
- 11 Pipe
- 12 Into Forest
- 13 Exit Forest
- 14 Upright
- 15 Wattle Graveyard
- 16 Pine Stack

EV 70 OAKSPRINGS

Distance: 1975m
Speed: 420mpm
T/A: 4min 42secs
Green Numbers on White

Google earth

© 2016 Google
© 2016 AfrGIS (Pty) Ltd.
Image © 2016 DigitalGlobe

Imagery Date: 7/1/2014 29°12'43.13" S 30°12'32.97" E elev 1595 m eye alt 2.76 km

2006



Start
Finish

EV 80 OAKSPRINGS

Distance: 2100m
Speed: 435mpm
T/A: 4min 50secs
Black Numbers on Blue

© 2016 AfrGIS (Pty) Ltd.
Image © 2016 DigitalGlobe
© 2016 Google

JUMPS

- 1 Hedge Log
- 2 Floating Log
- 3 Pine Brush
- 4 Bull Finch
- 5 Table
- 6 Bank
- 7 Wattle Logs
- 8 Lonely Hearts
- 9 4 Post Log
- 10 Hands Off
- 11 Water Pond
- 12a Square Water
- 12b Roller Brush
- 13 Green Pipe
- 14 Into Forest
- 15 Out of Forest
- 16 Irish Bank
- 17 Open Ditch
- 18 Wattle Graveyard
- 19 Rock Wall

Google earth

2006

Imagery Date: 7/1/2014 29°12'41.91" S 30°12'33.98" E elev 1593 m eye alt 2.87 km



Start
Finish

EV 90 OAKSPRINGS

JUMPS

- 1 Hedge Logs
- 2 Floating Log
- 3 Pine Brush
- 4 Bull Finch
- 5a Roller
- 5b Bank
- 5c Roller
- 6 Lonely Hearts
- 7 Bank
- 8 4 Posted Log
- 9 Trakhener
- 10 Curved Logstack
- 11a Wine Barrels
- 11b Log out
- 12 Giant Logs
- 13 Corner
- 14 Into Forest
- 15 Out of Forest
- 16 Log on Hill
- 17 Roller
- 18 Irish Bank
- 19 Open Ditch
- 20 Wattle Graveyard
- 21 Rock Wall

Distance: 2430m
 Speed: 450mpm
 T/A: 5min 24secs

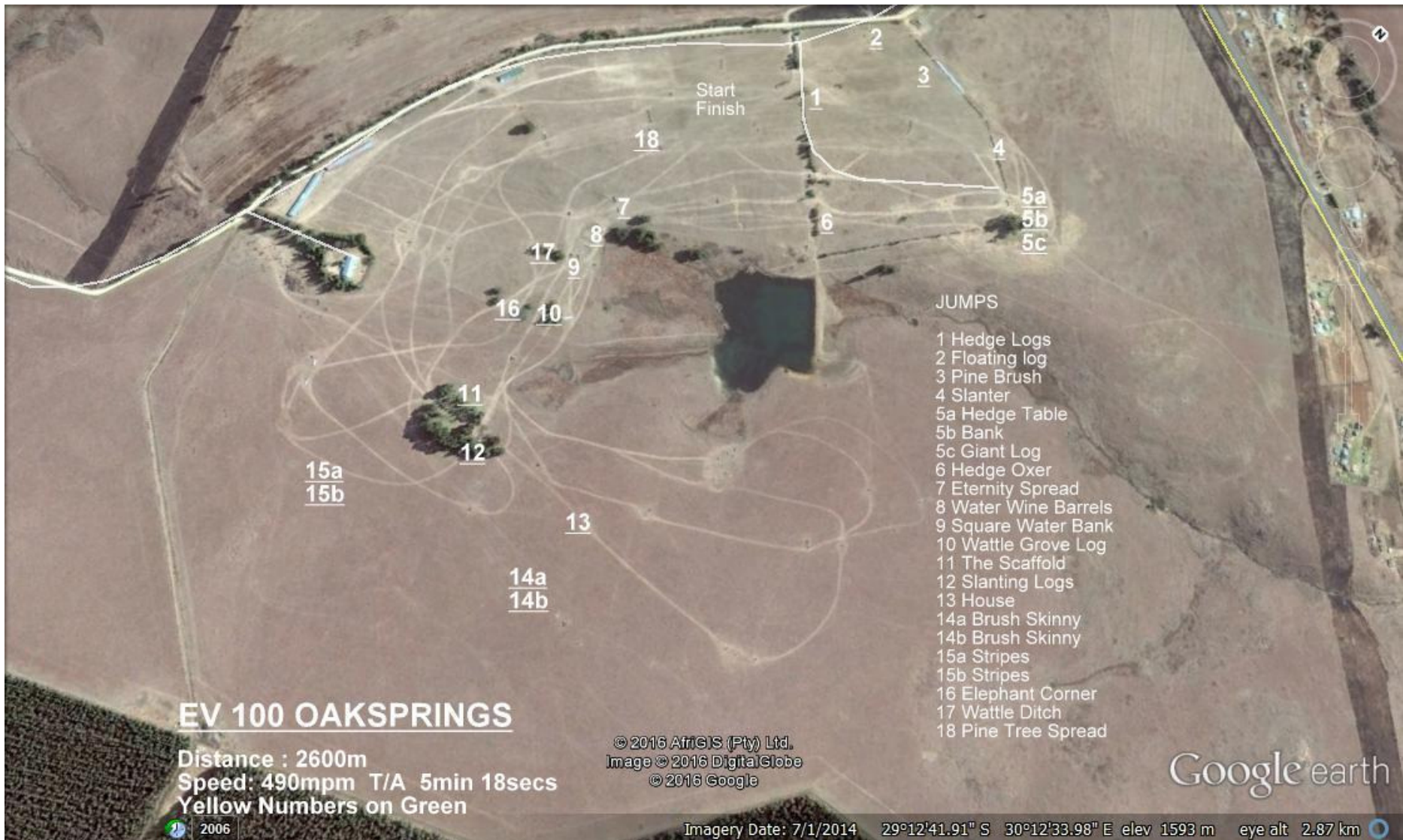
Black Numbers on Orange

© 2016 AfrGIS (Pty) Ltd.
 Image © 2016 DigitalGlobe
 © 2016 Google

Google earth

2006

Imagery Date: 7/1/2014 29°12'41.91" S 30°12'33.98" E elev 1593 m eye alt 2.87 km



Start
Finish

- JUMPS
- 1 Hedge Logs
 - 2 Floating log
 - 3 Pine Brush
 - 4 Slanter
 - 5a Hedge Table
 - 5b Bank
 - 5c Giant Log
 - 6 Hedge Oxer
 - 7 Eternity Spread
 - 8 Water Wine Barrels
 - 9 Square Water Bank
 - 10 Wattle Grove Log
 - 11 The Scaffold
 - 12 Slanting Logs
 - 13 House
 - 14a Brush Skinny
 - 14b Brush Skinny
 - 15a Stripes
 - 15b Stripes
 - 16 Elephant Corner
 - 17 Wattle Ditch
 - 18 Pine Tree Spread

EV 100 OAKSPRINGS

Distance : 2600m
 Speed: 490mpm T/A 5min 18secs
 Yellow Numbers on Green

© 2016 AfrGIS (Pty) Ltd.
 Image © 2016 DigitalGlobe
 © 2016 Google

Google earth



Start
Finish

Jumps

- 1 Hedge Logs
- 2 Floating Log
- 3 Pine Brush
- 4 Slanter
- 5a Hedge Skinny
- 5b Bank
- 5c Oxer
- 6 Double Brush
- 7 Trakhener
- 8 Skinny Log
- 9a Water Brush
- 9b Water Exit
- 10 Wattle House
- 11 Irish Bank
- 12 Forest Logs
- 13 Corner
- 14a Offset Brush
- 14b Offset Brush
- 15 Liverpool
- 16 Forest Log Stack
- 17 Keyhole
- 18a Targets
- 18b Targets
- 19 Floating Eskom Poles
- 20 Ascending Spread
- 21 Rock Oxer

OAKSPRINGS CIC*

Distance: 2900
 Speed: 520mpm
 T/A: 5min 35 sec

White Numbers on Red

© 2016 AfrGIS (Pty) Ltd.
 Image © 2016 DigitalGlobe
 © 2016 Google

Google earth

2006

Imagery Date: 7/1/2014 29°12'41.91" S 30°12'33.98" E elev 1593 m eye alt 2.87 km



OAKSPRINGS CIC**

White Numbers on Blue

Distance: 3400m
 Speed: 550mpm
 T/A: 6min 11sec

© 2016 AfrGIS (Pty) Ltd.
 Image © 2016 DigitalGlobe
 © 2016 Google

- Jumps
- 1 Hedge Logs
 - 2 Floating Log
 - 3 Pine Brush
 - 4 Pine Upright
 - 5 Eternity Spread
 - 6 Pine Oxer
 - 7a Hedge Skinny
 - 7b Bank
 - 7c Triple Brush
 - 8 Double Brush Oxer
 - 9a SA Horses
 - 9b SA Horses
 - 10 Pine Corner
 - 11 Eternity Brush
 - 12 Water Skinny
 - 13a Water Bank
 - 13b Log Stack
 - 14 Irish Bank
 - 15a Key Delta Rails
 - 15b Key Delta Rails
 - 16a Slanting Brush
 - 16b Slanting Brush
 - 17 Forest Fan
 - 18 Forest Oxer
 - 19 Curved Brush Ditch
 - 20 Ascending Spread
 - 21 Giant Log Oxer

2006

Imagery Date: 7/1/2014 29°12'41.91" S 30°12'33.98" E elev 1593 m eye alt 2.87 km

Google earth