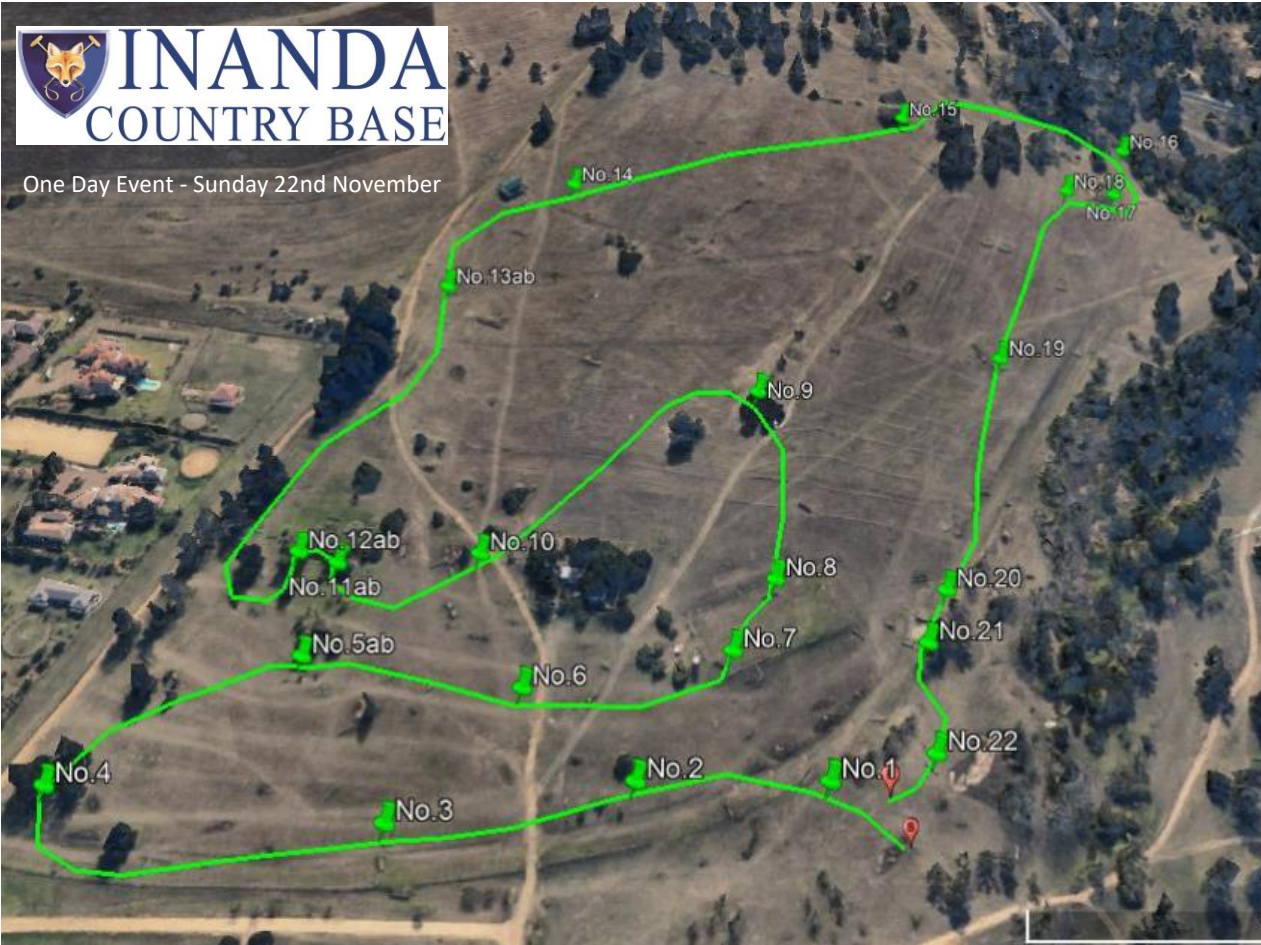




One Day Event - Sunday 22nd November



Ev.90	
Numbers:	Green
Course Length:	2295m
Speed:	450mpm
Time:	5m06s
	1 Stick Heap
	2 Loo Seat
	3 Pipe
	4 Diagonal Bags
	5ab Brush to Skinny
	6 T Box
	7 Picnic Table
	8 Tyre Oxer
	9 Brush
	10 Skinny Tyres
	11ab Log to Splash
	12ab Step to Hippo
	13ab Narrow Brushes
	14 Barn Pipes
	15 Little Cheese
	16 Big Oxer
	17 Brush on Top
	18 Swazi Arrowhead
	19 Old Log
	20 Palisades
	21 Pete's Flowerstand
	22 Final Spread



One Day Event - Sunday 22nd November



Ev.80
 Numbers: Blue
 Course Length: 2020m
 Speed: 435mpm
 Time: 4m38s

1	Long Poles
2	Eskom Stack
3	Swazi Box
4	Pimms Spinney
5	In the Tree
6	Dipper Rail
7	Dipper Oxe
8	Little Cheese
9	Eskom Oxe
10	Andrea's Crossing
11	Log Heap & Snakes
12	Log B4 Water
	* Compulsory flags in water
13	Little Crocodile
14	Pine Log
15	T Box
16	Trough the Trees
17	Slanter
18	Ditch & Rail
19	Rasta Box
20	Floating Pole
21	Oxe
22	Up To the Water
23	Swazi Skinny
24	Final Spread



One Day Event - Sunday 22nd November 2020



Ev.70	
Numbers:	Red
Course Length:	1965m
Speed:	420mpm
Time:	4m40s
1	Long Logs
2	Hunt Stack
3	Hume Pipe
4	Natural Log Spread
5	Pimms Spinney
6ab	Rails & Log
7	Swazi Box
8	Brian's Corner
9	The X Pole
10	Open Ditch
11	Logs through or around
	* Water is NOT compulsory
12	Long Rails
13	Big Pine
14	Ancient Log
15	Drums Up
16	Drums Down
17	Garden Fence Down
	* Compulsory Flag
18	Normanday Skinny
19	Downhill Stack



One Day Event - Sunday 22nd November



Ev.60	
Numbers:	Pink
Course Length:	1325m
Speed:	400mpm
Time:	3m19s
	1 Log under Tree
	2 Pine Trunks
	3 Old One
	4 Bales
	5 Sacks
	6 Bent Log
	7 Pipe & Tyres
	8 Pipe
	9ab Skinny to Ditch
	10 White Tyres
	11 Hunt Logs
	12 Downhill Pine
	13 Croc Monsters
	* Compulsory Red Flag
	14 H
	15 Parallel Bars