



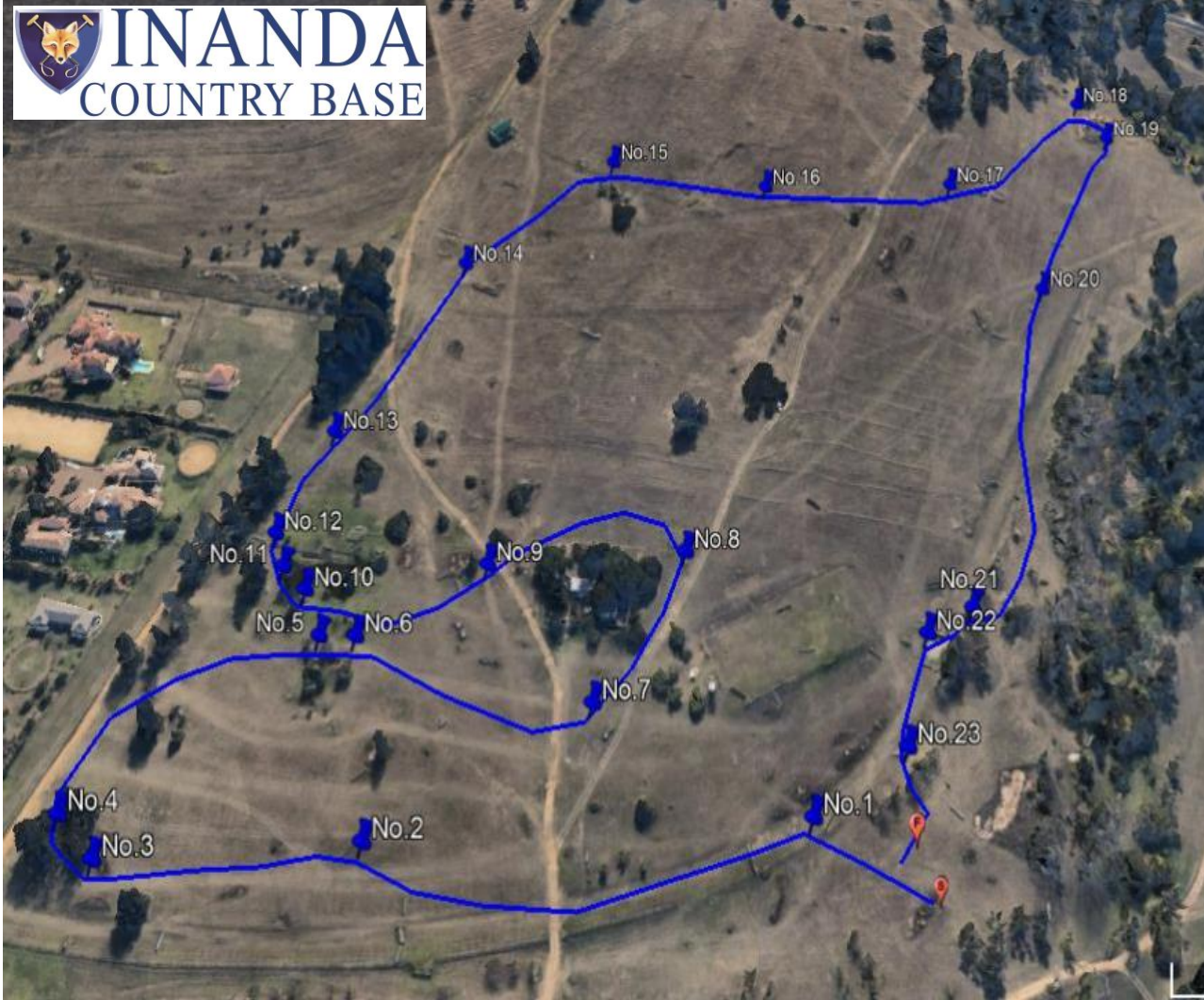
Ev.100	
Numbers:	Yellow
Course Length:	2690m
Speed:	490mpm
Time:	5m29s
1	First Leap
2	Pipes
3	Saddlebrook Oxer
4	Sacks
5	Faces
6	Big Parallel
7	Trish's Pipe
8	Bench
9	Brush
10ab	Water steps
11ab	Up and Over
12	Tree Brush
13ab	Narrow Brushes
14	Barn Drop
15ab	Offset Spreads
16	Corner
17	Slanter
18	Log on Top
19	Grey Rails
20	Oxer
21	Pete's Flowerstand
22	Final Brush



Christmas Event - 5th & 6th December



Ev.90	
Numbers:	Green
Course Length:	2180m
Speed:	450mpm
Time:	4m50s
	1 Stick Heap
	2 Loo Seat
	3 Pipe
	4 Diagonal Bags
	5 Hunt Jump
	6ab Anvil Skinny's
	7 Corner
	8ab Log to Table
	9 Rail Drop
	10 Brush
	11ab Beam to Splash
	12 Temporary
	13ab Offset Brushes
	14 Through the Trees
	15 Ditch & Rail
	16 Slanter
	17 Big Oxer
	18 Rastaman
	19 Old Log
	20 Into the Water
	21 Pipe Out
	22 Final Spread

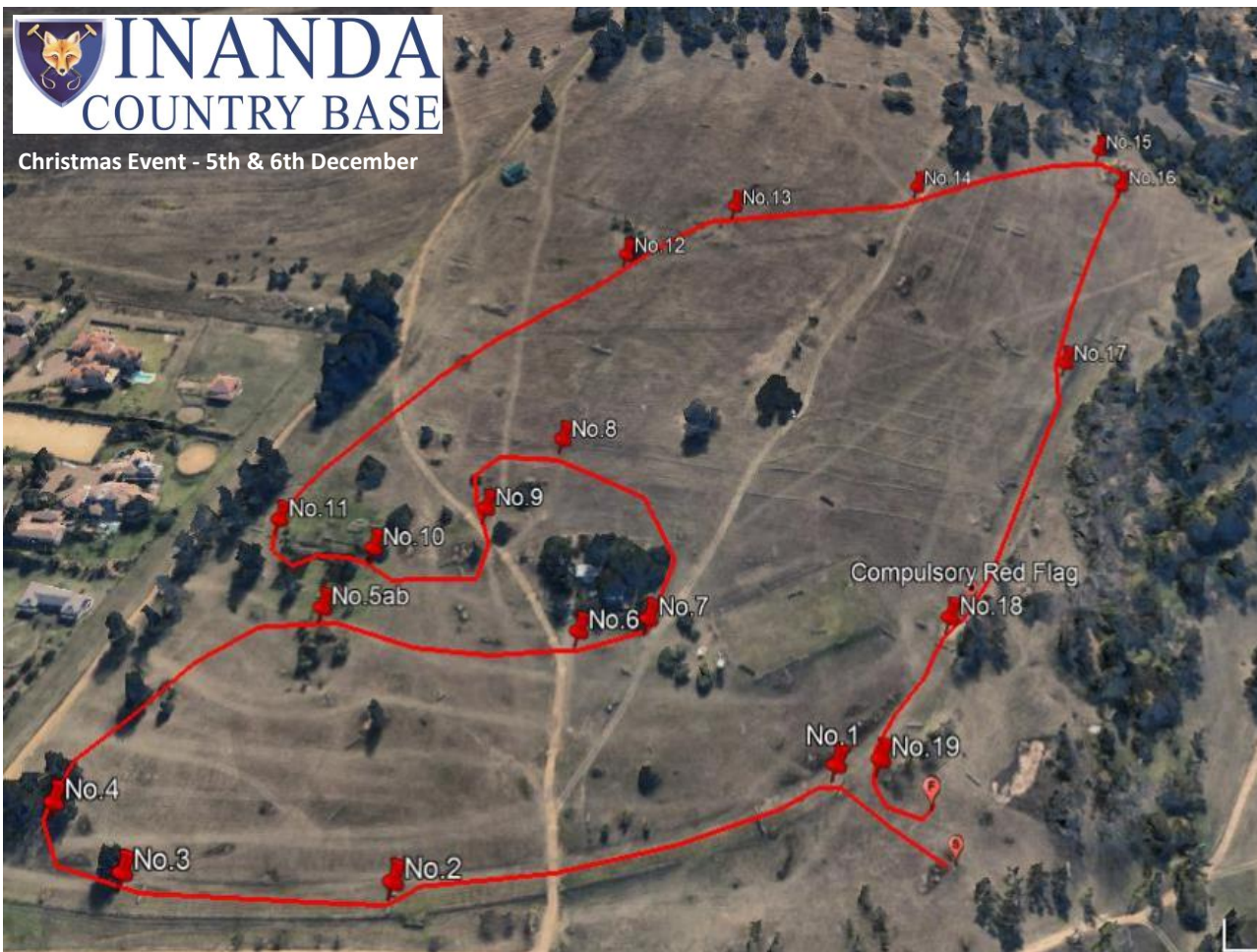


Ev.80
 Numbers: Blue
 Course Length: 1910m
 Speed: 435mpm
 Time: 4m23s

1	Long Poles
2	Telegraph Log
3	Pimms Pipe
4	Pimms Upright
5	Dipper Rail
6	Dipper Oxer
7	Little Cheese
8	Eskom Oxer
9	Brush Crossing
10	Little Crocs
11	Step-up
12	Portal
13	Pine Log
14	T-Box
15	Holely Oxer
16	Floating Log
17	Hunt Pile
18	Rasta Box
19	Little Floating Log
20	Oxer
21	Up To the Water
22	Swazi Skinny
23	Final Spread



Christmas Event - 5th & 6th December



Ev.70	
Numbers:	Red
Course Length:	1900m
Speed:	420mpm
Time:	4m31s
	1 Long Logs
	2 Hume Pipe
	3 Natural Log Spread
	4 Pimms Spinney
	5ab Rails & Log
	6 Log Stack
	7 Brian's Corner
	8 The X Pole
	9 Open Ditch
	10 Log through or around
	11 Long Rails
	12 Big Pine
	13 Oxer
	14 Ancient Log
	15 Pole Stack
	16 Swazi Box
	17 Log Drop
	* Compulsory Flag
	18 Normanday Skinny
	19 Downhill Stack



Christmas Event - 5th & 6th December



Ev.60	
Numbers:	Pink
Course Length:	1325m
Speed:	400mpm
Time:	3m19s
	1 Log under Tree
	2 Pine Trunks
	3 Old One
	4 Bales
	5 Sacks
	6 Bent Log Brush
	7 Pipe & Tyres
	8 Pipe
	9ab Long poles to Ditch
	10 White Tyres
	11 Hunt Logs
	12 Downhill Pine
	13 Croc Monsters
	* Compulsory Red Flag
	14 H
	15 Parallel Bars