



February ODE - 26th February 2022

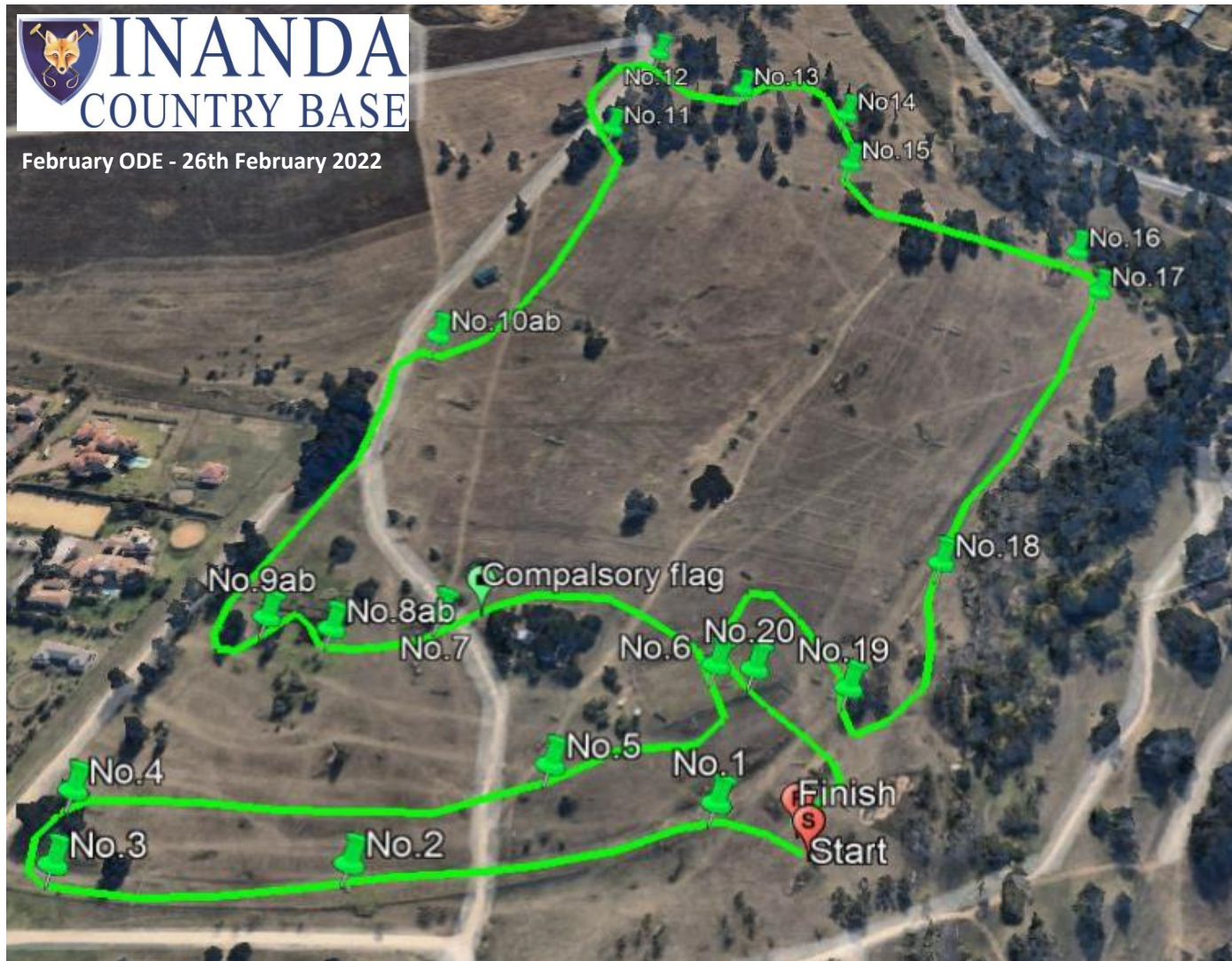


One Star
 Numbers: Yellow
 Course Length: 2850m
 Speed: 500mpm
 Time: 5m42s

1	Winn's Jump
2	Ditch & Rails
3	Big Cheese
4ab	Gate Option
5	Upright
6	Oxer
7	Off the Road
8ab	Bull frog into Water
9ab	Step to Tree Brush
10	T-Upright
11	Tim's Brush
12	Skinny in Trees
13	Corner
14	Frangible Oxer
15	On Rasta
16	Brush
17	Another Brush
18	Ditch & Rails
19	Into Normandy
20	Last Fence



February ODE - 26th February 2022



Ev.95

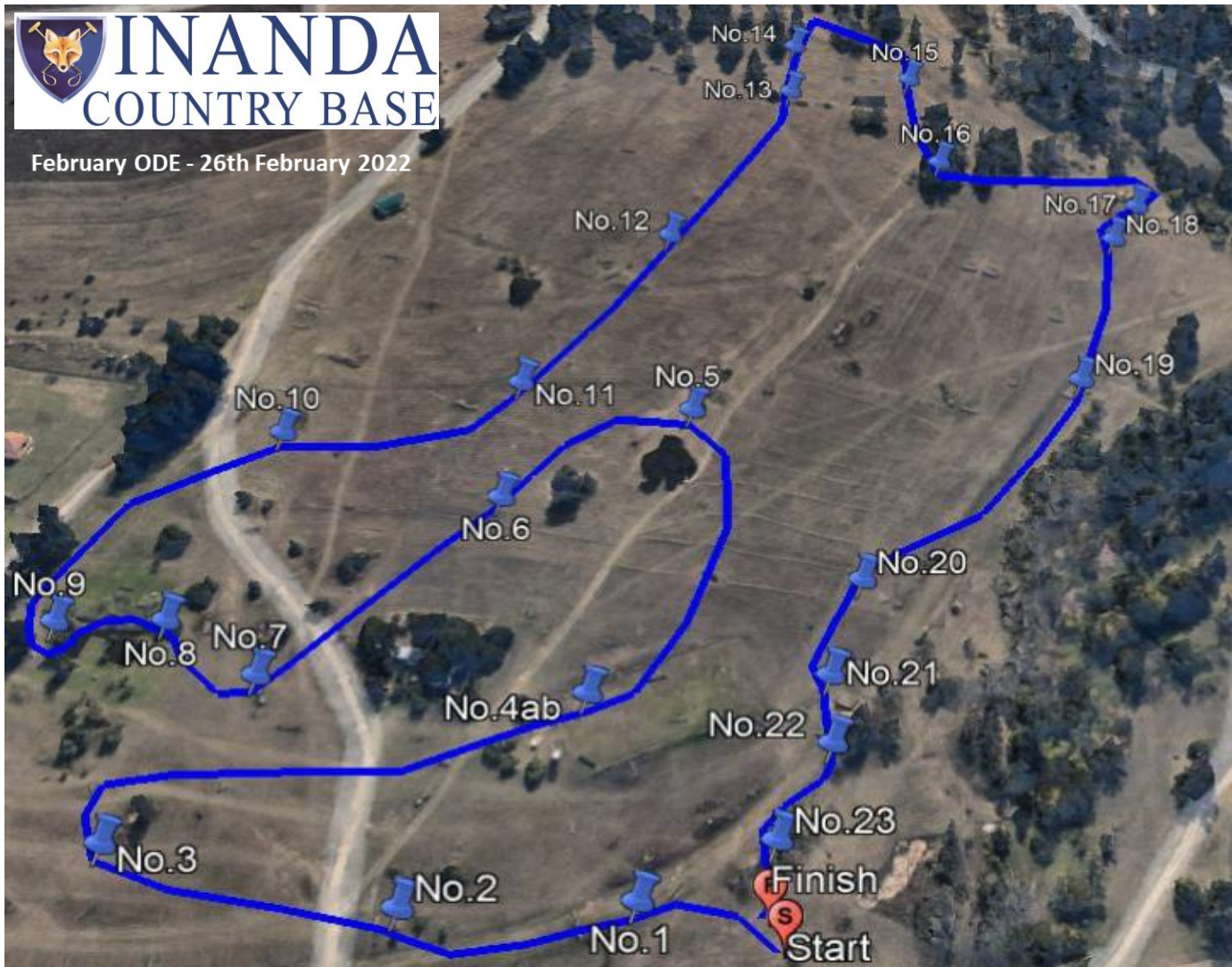
Numbers: Green
 Course Length: 2590m
 Speed: 475mpm
 Time: 5m27s

1	Oxer
2	Pipes
3	Pimms Oxer
4	Pimms Skinny
5	Slanter
6	Crossed Pines
	Compulsory Flag
7	Cheese
8	Roller
9ab	Step to Roller
10ab	Ditch Gate to Blenheim
11	Angeled Upright
12	Tree Brush
13	Picnic Table
14	Ditch Log
15	Corner
16	Rasta
17	Brush
18	Beam of the Track
19	Triple Rails into Normandy
20	Skinny of sappi
21	Final



INANDA COUNTRY BASE

February ODE - 26th February 2022



Ev.85

Numbers: Blue
 Course Length: 2175m
 Speed: 455mpm
 Time: 4m47s

1	Swazi Box
2	T-Box
3	Hunt Stack
4ab	Log to Slanter
5	Faces
6	Pine Log
7	Road Crossing
8	Gate Into Water
9	Out of Water
10	Big Pine Oxer
11	Hippo
12	Picnic Table
13	ZigZag
14	Trekhaner
15	Triangle
16	Cheese wedge
17	Rasta Log
18	Brush
19	Ditch & Rails
20	Beam
21	Swazi Box
22	Arrowhead
23	Tortises



February ODE - 26th February 2022



Ev.75	
Numbers:	Red
Course Length:	1920m
Speed:	440mpm
Time:	4m20s
	1 Eskom Logs
	2 Holey One
	3 Pimms Upright
	4ab Gum Oxer to Upright
	5 Pipes
	6 Pine Brush
	7 Swazi Box
	8 Gate
	9ab Pine Brush Double
	10 Old Grey Log
	11 Old Oxer
	12 Brush
	13 Hunt Stack
	14 Swazi Box on Rasta
	15 Ditch & Rails
	16 Floating Log
	17 Arrow Head Out Water
	18 Final Leap

