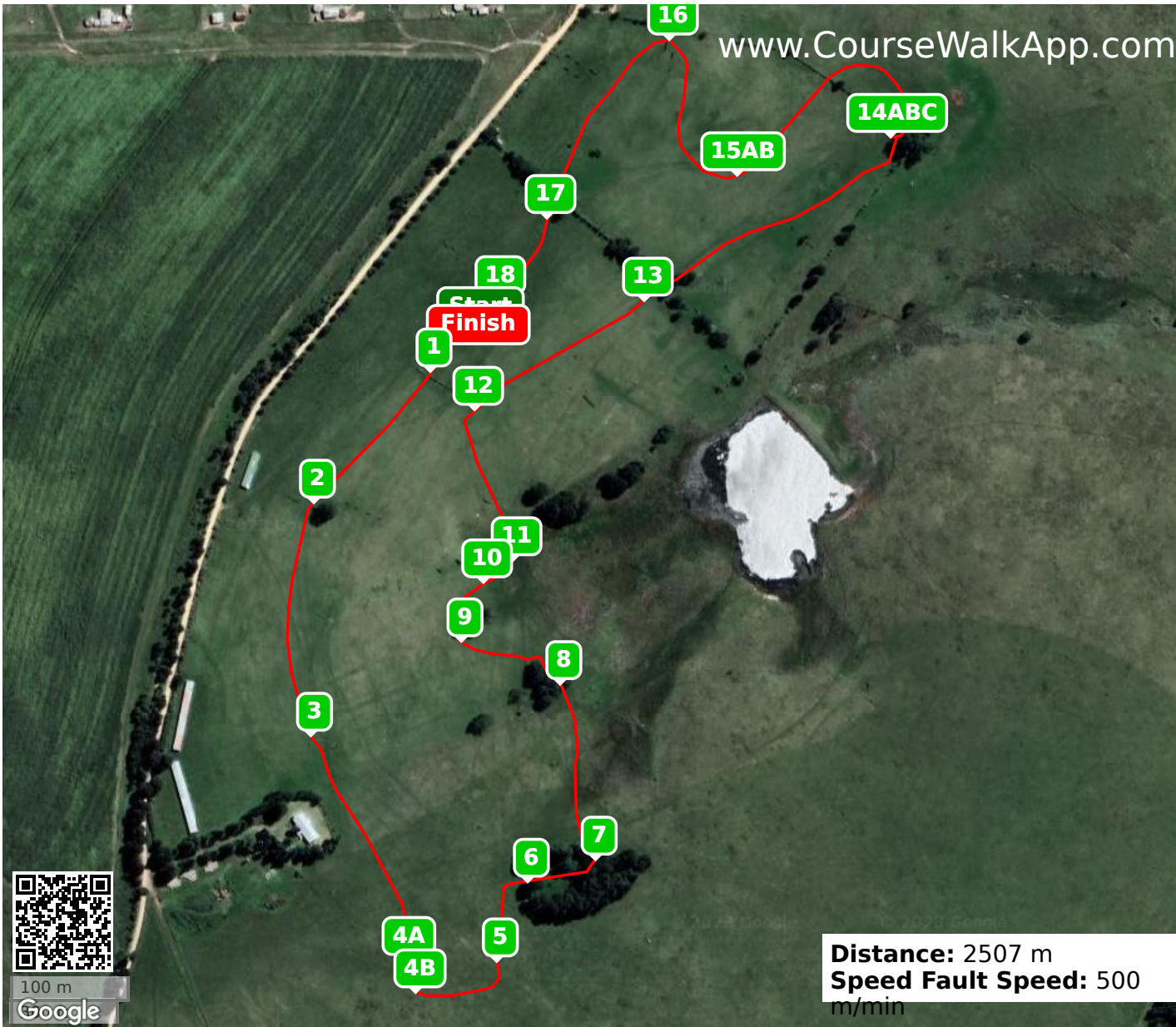


Oaksprings (ID: 34031) - CCN1*- White on Green



- 1** Rock Oxer
- 2** Bale Spread
- 3** Irish Bank
- 4A** Tomo's T's
- 4B** Tomo's T's
- 5** Giant Logs
- 6** Forest Spread
- 7** Forest Exit Logs
- 8** wattle Copse
- 9** Bit of a Ditch
- 10** Water Logs
- 11** White Logs
- 12** Wishbone
- 13** Brush
- 14ABC** Bank Complex
- 15AB** Gates Combo
- 16** Brush
- 17** Triple Bar
- 18** Brush Home

