

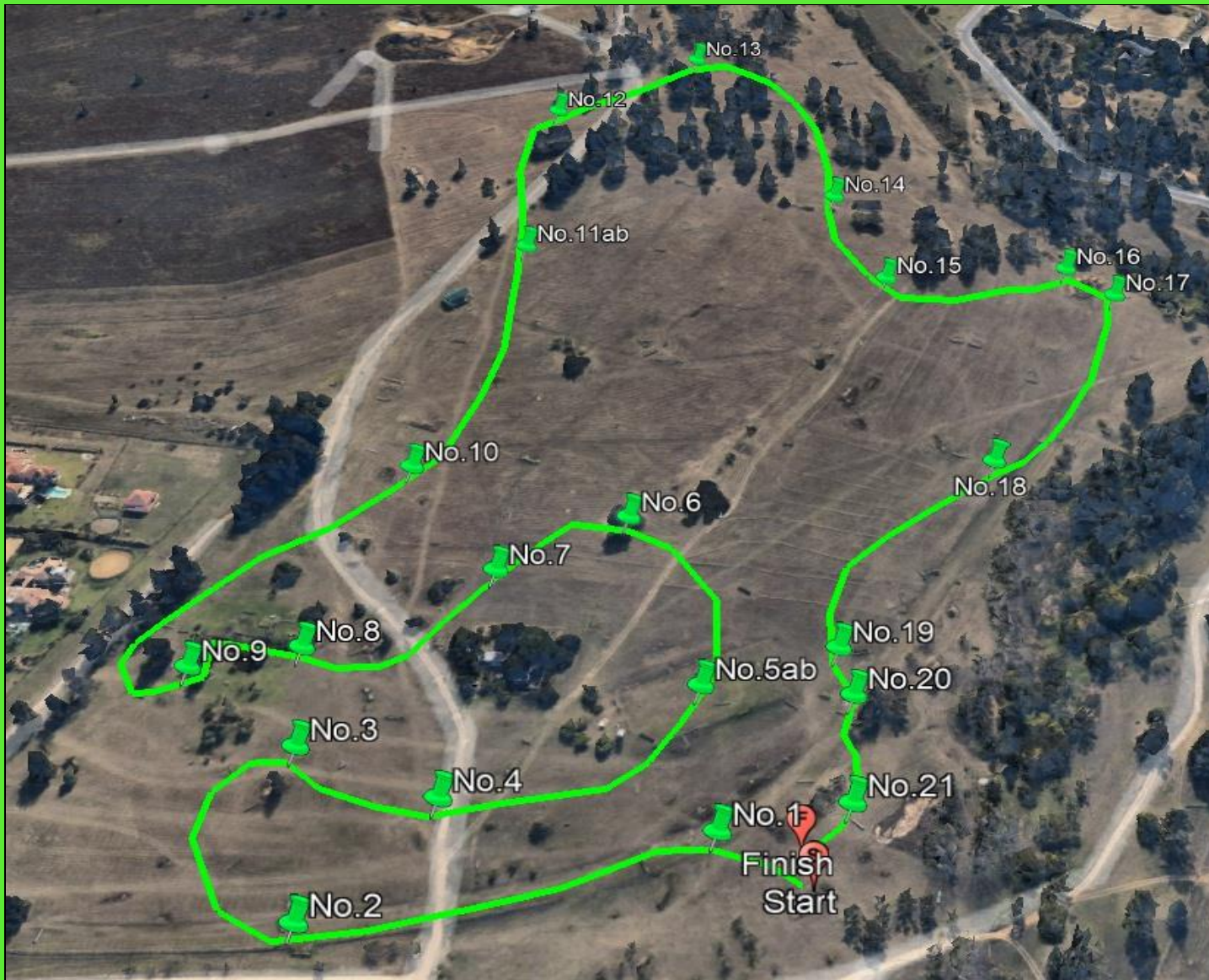
# One Star



Numbers: Yellow  
 Course Length: 3000m  
 Speed: 500mpm  
 Time: 6m00s

1	Sawdust Start
2	Ditch & Rails
3	Green Log Pile
4	Trish's Big Pipe
5ab	Frangible Corner to Tim's Brush
6	Frangible Corner
7	Big Table
8	Triple Bar
9	White Gate at Water
10ab	Step to Bull Frog out of Water
11	Barn Oxer
12ab	Double of Brushes
13	Blenhiem Brush
14	Trekehner
15	Patrick's Leap
16	Rastaman's Drop
17ab	Off-set Brushes
18	Slanter
19	Brush Skinny
20	Normandy Splash
21	Final Leap





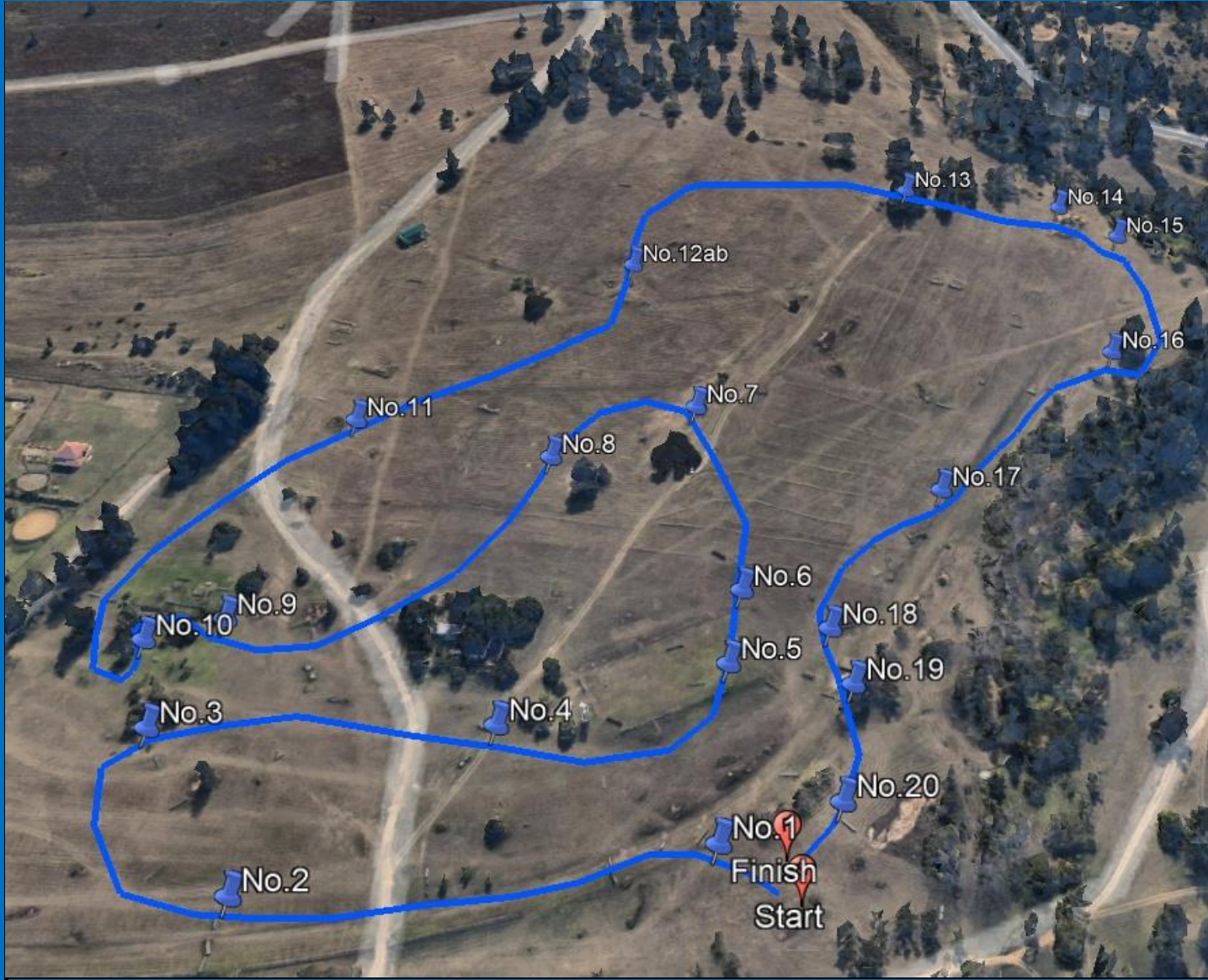
## Ev.95



Numbers: Green  
 Course Length: 2380m  
 Speed: 475mpm  
 Time: 5m01s

1	Slanter
2	Roller
3	Big Table
4	Trish's Pipe
5ab	Sappi Gate to Mini Cheese
6	Gum Tree Oxer
7	Pine Skinny
8	Floating Log before Water
9	Hippo Brush out of Water
10	Eskom Oxer
11ab	Off-set Rollers
12	Brush Leap
13	Lou's Log
14	Trekehner
15	Slanter
16	Swazi Roller
17	Swazi Roller
18	Gum Skinny
19	Log Pile
20	Roller Brush
21	Triple Bar





## Ev.85



Numbers: Blue  
 Course Length: 2120m  
 Speed: 455mpm  
 Time: 4m40s

1	Brush House
2	Poplar Log
3	Triple Bar
4	Zig-Zag Brush
5	Eskom Logs
6	Mini Cheese
7	Brush Leap
8	Trekehner
9	Concrete Pipe
10	Roller Brush
11	Bale Upright
12ab	Oxer to Upright
13	Swazi Faces
14	Pine Leap
15	Triple Bar
16	Swazi Portable
17	Gum Skinny
18	White Tyres
19	Normandy Splash
20	Giant Log







