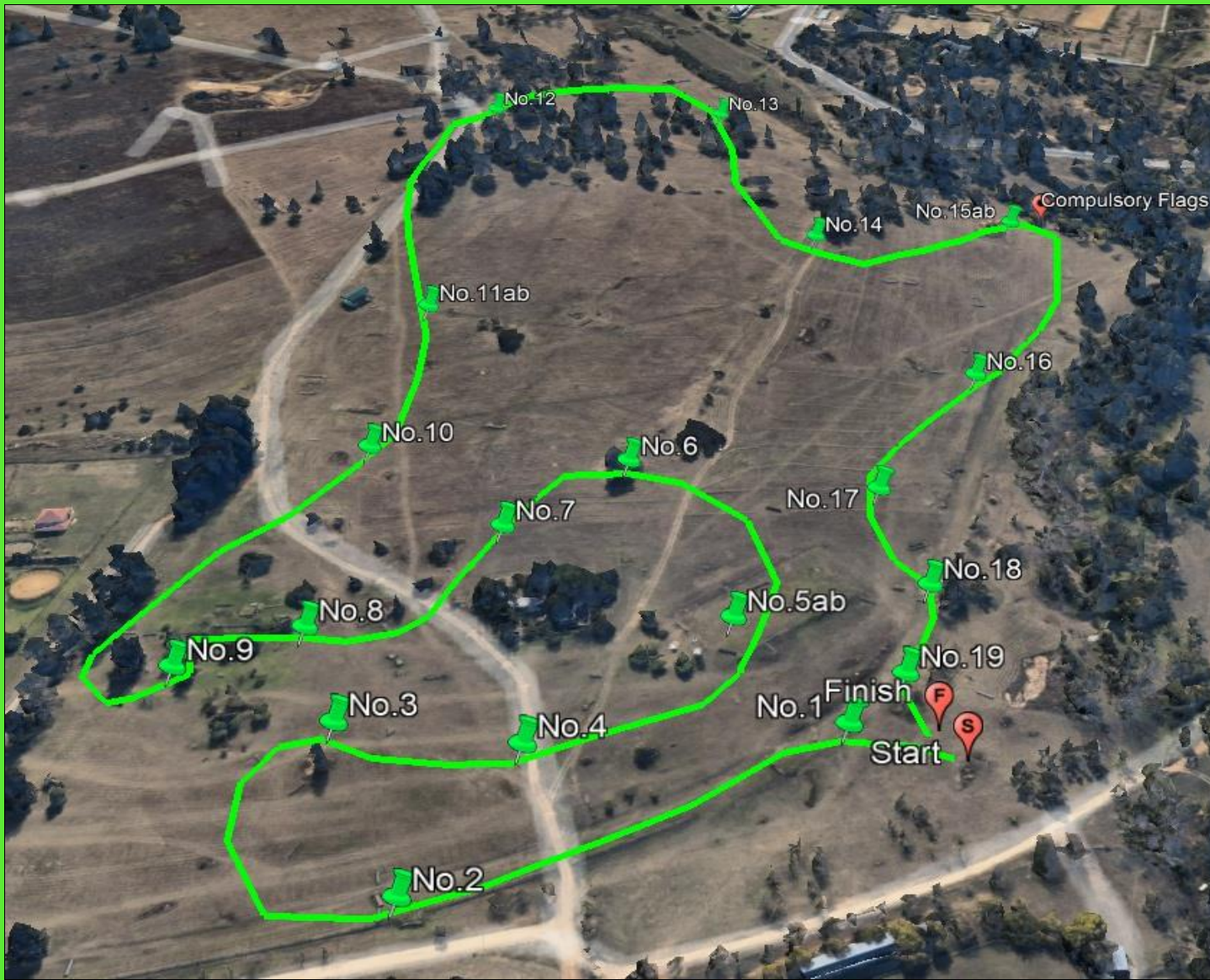


One Star



Numbers: Yellow
 Course Length: 2720m
 Speed: 500mpm
 Time: 5m26s

1	Sawdust Bags
2	Ditch & Rails
3	Trish's Pipe
4ab	Frangible Corner to Tim's Brush
5	Frangible Corner
6	Big Table
7	Triple Bar
8	White Gate
9ab	Step to Brush
10	Barn Oxer
11	Frangible Gate
12	Brush Leap
13ab	Lou's Log to Blenheim Brush
14	Trekehner
15	Patrick's Leap
16	Off the Edge
17ab	Off-set Rollers
18	Slanter
19	Narrow Brush
20	Normandy Splash
21	Old Logs

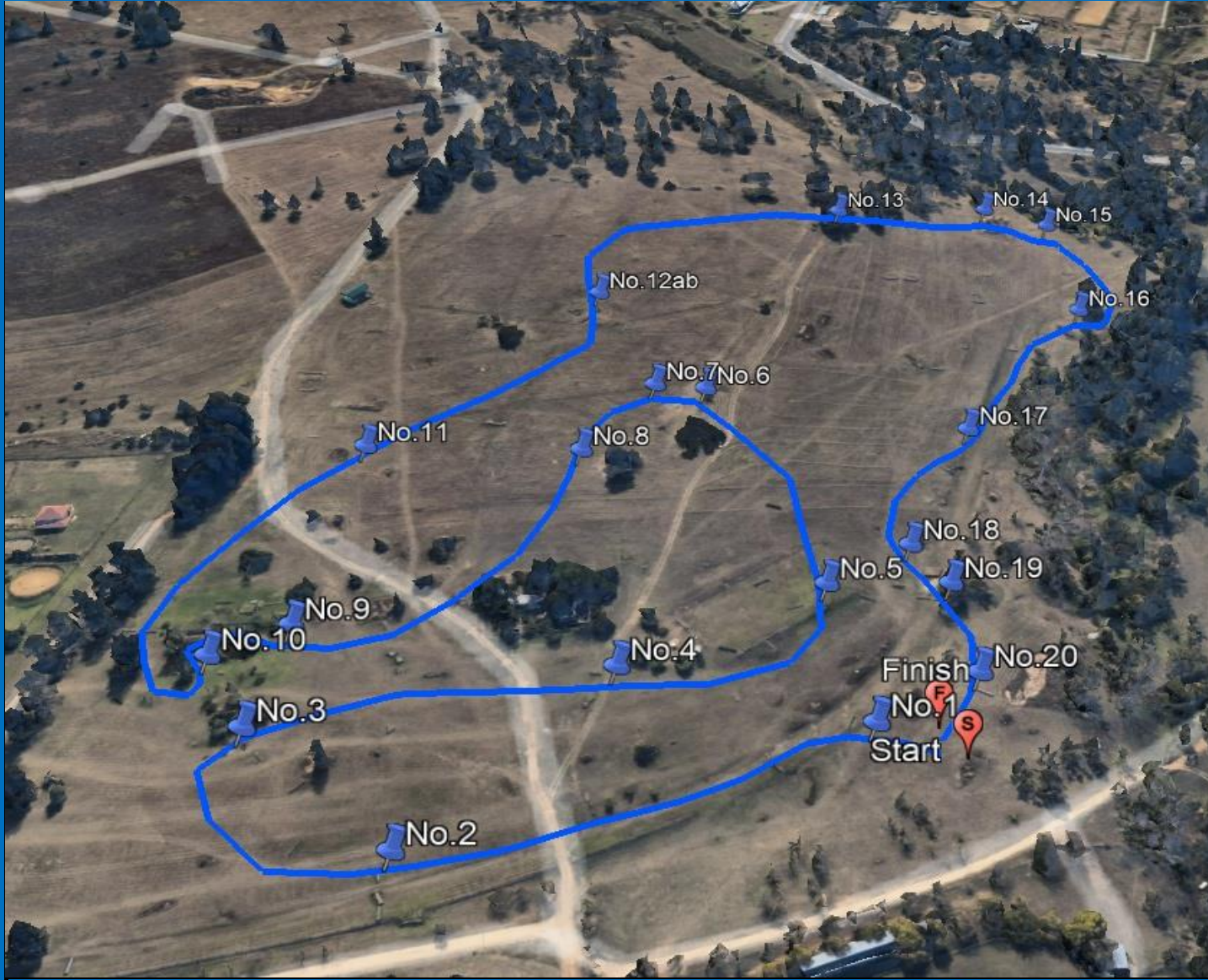


Ev.95



Numbers: Green
 Course Length: 2450m
 Speed: 475mpm
 Time: 5m09s

1	Slanter
2	Concrete Pipe
3	Table
4	Trish's Pipe
5ab	Claudia's Gate to Mini Cheese
6	Oxer under Trees
7	Pine Skinny
8	Floating Log at Water
9	Step to Hippo Brush out of Water
10	Eskom Oxer
11ab	Off-set Pipes
12	Epoxer
13	Big Ditch
14	Slanter
15ab	Double on Rasta
	Compulsory Flags
16	Gum Skinny
17	Eskom Stack
18	Roller Brush @ Normandy
19	Final Leap



Ev.85



Numbers: Blue
 Course Length: 2120m
 Speed: 455mpm
 Time: 4m40s

1	Brush House
2	Poplar Log
3	Triple Bar
4	Zig-Zag Brush
5	Eskom Table
6	Brush Leap
7	Mini Cheese
8	Trekehner
9	Concrete Pipe before Water
10	Roller Brush after Water
11	Upright with Bullfrog
12ab	Off sets Oxer to Upright
13	Swazi Faces
14	Pine Leap
15	Triple Bar Below
16	Swazi Portable
17	Gum Skinny
18	Swazi Shields
19	Normandy Splash
20	Giant Log

